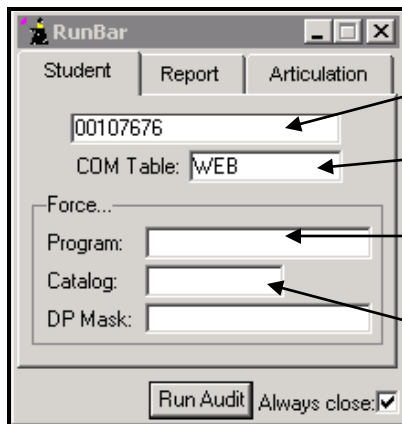
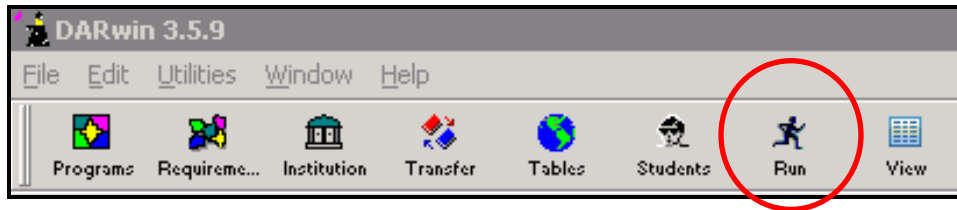


Using the Run Bar in the client to limit output for DARS Reports

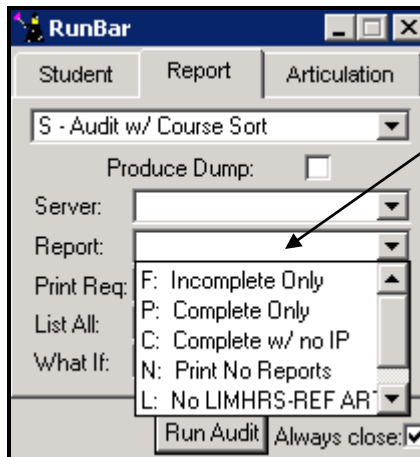
In DARS, bring up the Run Bar by selecting the Run icon:



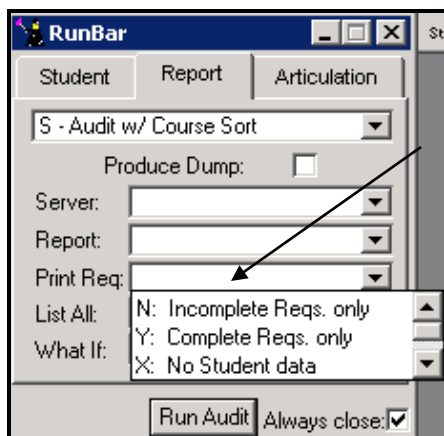
You can put in a Tech ID of a student if you want; otherwise the tech ID(s) will be entered in DA0001CP.
You may also force a COM table if needed.

You may also specify a Program (Dprog) if you don't want the student's major to pull from ISRS.

Enter the catalog YRTR if needed.



In the Report field, there are several choices, as listed here, depending on how you wish to limit this audit run.



In the Print Req field, you can further limit the requirements that print on the audit by choosing either only incomplete requirements or only complete requirements.

For a Graduation check audit run, you may wish to select the P option to produce audits only for those students who have met all degree requirements. More information on graduation clearance audits is at: http://www.dars.mntransfer.org/support/documents/pdf/grad_clearance_audit.pdf

Be sure all of the fields on the Articulation tab are blank.

THEN click the RUN AUDIT button!

Next - in ISRS

If you are doing a batch of students, first load the group into ISRS using UT5003UG.

1. Log in to the reports menu and select DA0001CP.

Report Parameter Description	Required	Parameter Value	Index
User ID, Report ID, Date Time:		TRALLELA- 0000486200- jf4858nt, ,	<
Tech Id of Student (up to 25):			
Output to Darwin (Y/N/W):		N	
Degree Program:			
Use Com Table:			
Force Catalog YRTR:			
Darwin Report Options User ID:		trallelada	
Export to ISRS: N,EXPORT=D,L,S		N	

- For a batch, double click in the User ID, Report ID, Date Time: field and select the correct 'report ID' for which you would like to run degree audits. F2 - Accept.
 - For individual students leave blank.
2. Enter your DARS USER ID in the DARWIN REPORT OPTIONS USER ID field...this connects the parameters you set in the Run Bar with the ISRS report generation process.
 3. Store the report.

Posted: 2/13/2017