

Updating the Goal Area changes in MnSCU Transfer Articulation Tables

Question: How do I update the Transfer Articulation table when a MnSCU institution removes the Goal area designation from a course?
and

How do I update the Transfer Articulation table when a MnSCU institution adds a Goal area designation to a course?

Transfer Articulation rules should be changed when significant content changes in a Source course. A date range on a Source course is typically encoded when the content of the MnTC Goal has changed.

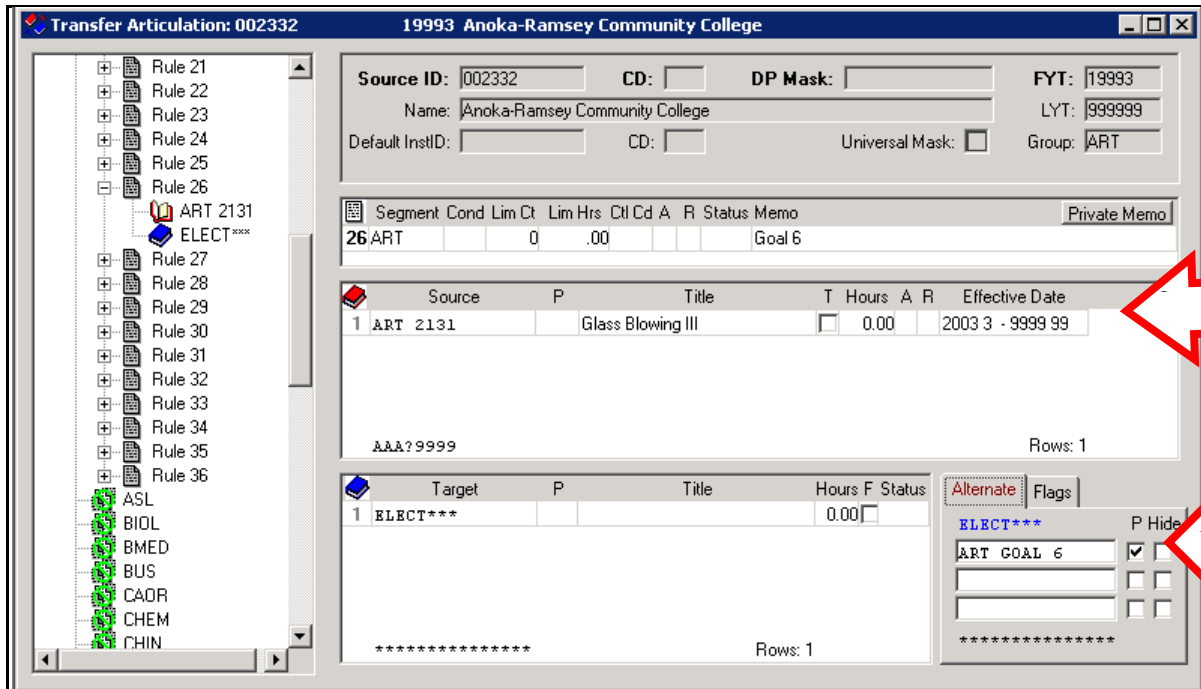
Updating the Source Transfer Articulation table requires two changes:

1. End-date Effective Date field for the source rule.
2. Add a new rule, following the end-dated rule, with later Effective Dates.

How do I update the Transfer Articulation table when a MnSCU institution removes the Goal area designation from a course?

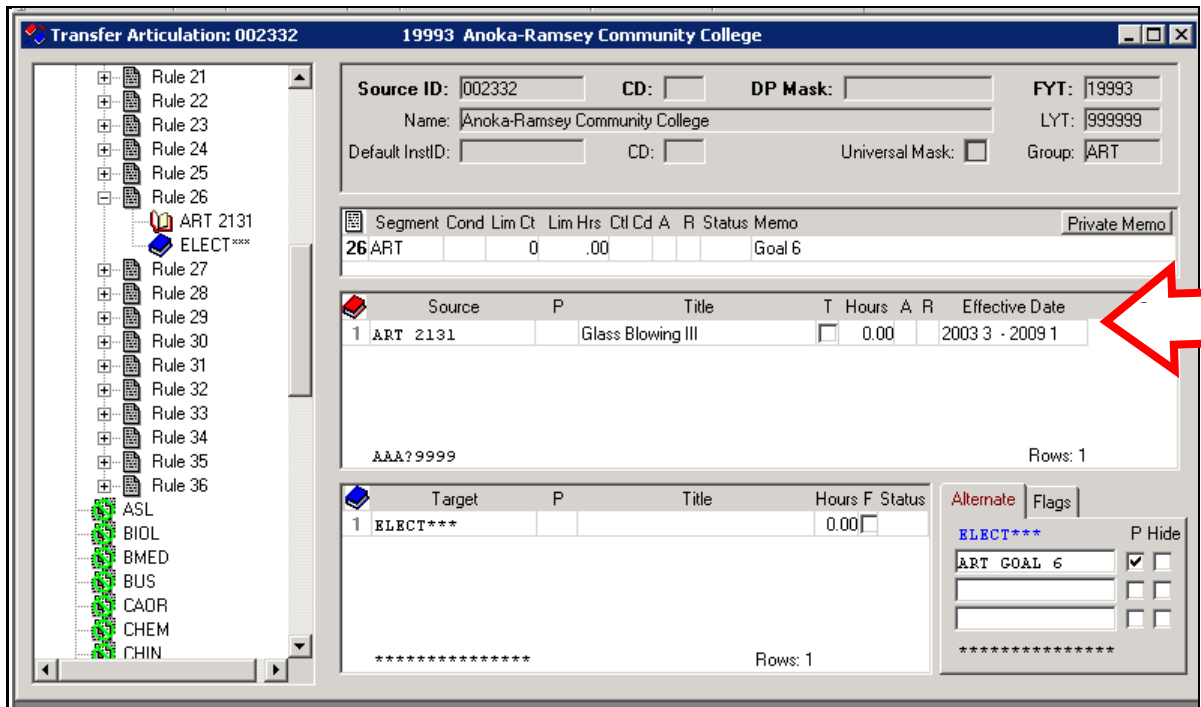
In our example, ART 2131, Glass Blowing III, from Anoka Ramsey Community College, taken between Fall 2002 and Summer 2008, was a Goal 6 course. Beginning with Fall 2008, ART 2131, Glass Blowing III, no longer carries a Goal 6 designation.

In the screen shot following, ART 2131, Glass Blowing III, articulates to ELECT***, and Alternate ART GOAL 6. The Effective Date range for the course is 20033-999999.



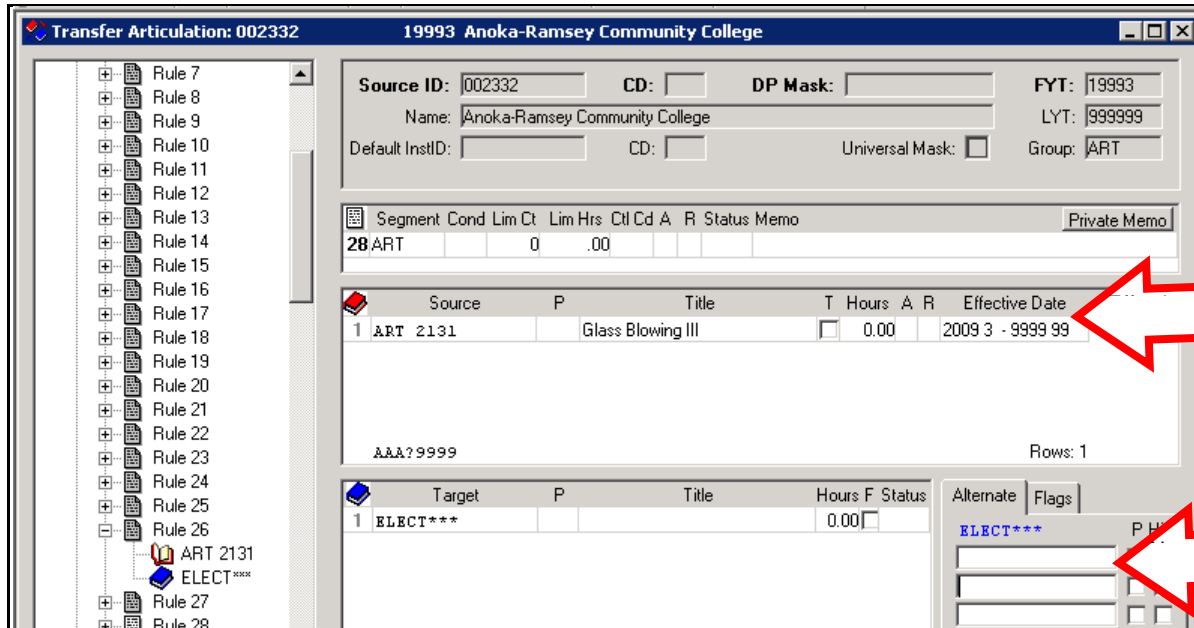
1. On the Source TA table, end-date Effective Date field for the current rule. In our example, ART 2131 was Goal 6 through summer of 2008.

Change the end-date of 9999 99 to 2009 1.



2. Add a new rule, following the end-dated rule, with later Effective Dates. You will need to insert a rule after the end-dated rule.

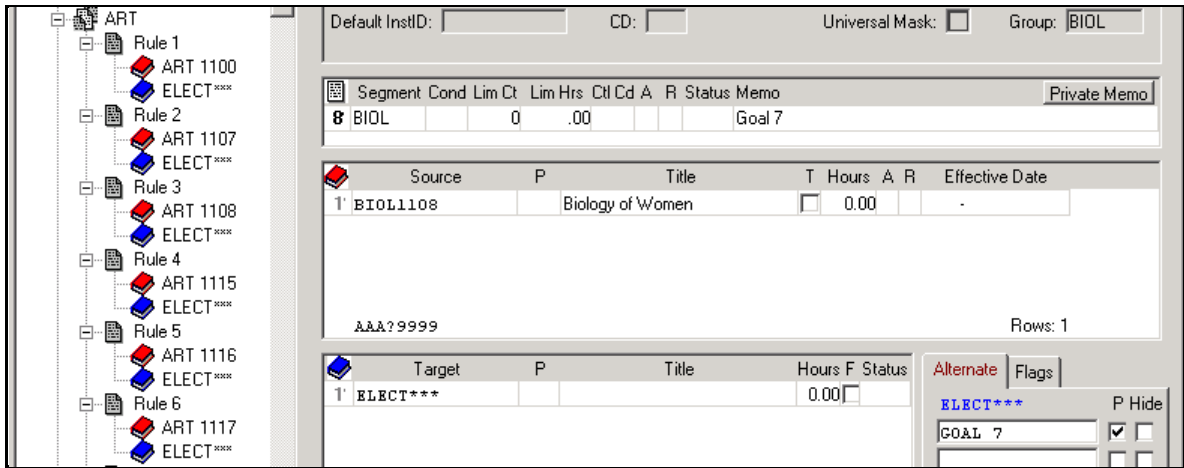
In the example below, the Goal change is reflected in the new rule by removing the Alternate. The new ART 2131 rule articulates to ELECT***, and no alternate.



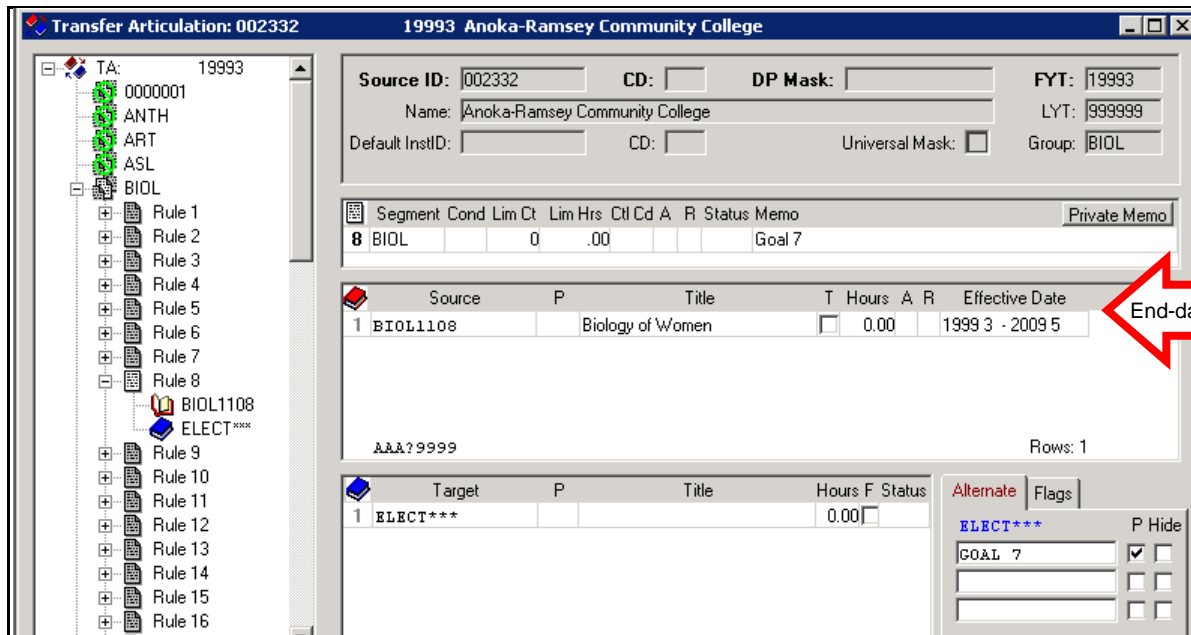
How do I update the Transfer Articulation table when a MnSCU institution adds a Goal area designation?

In our example, BIOL1108, Biology of Women, from Anoka Ramsey Community College, articulates as ELECT***, and Alternate Goal 7. In Spring 2008, the course was Goal 3 and 7.

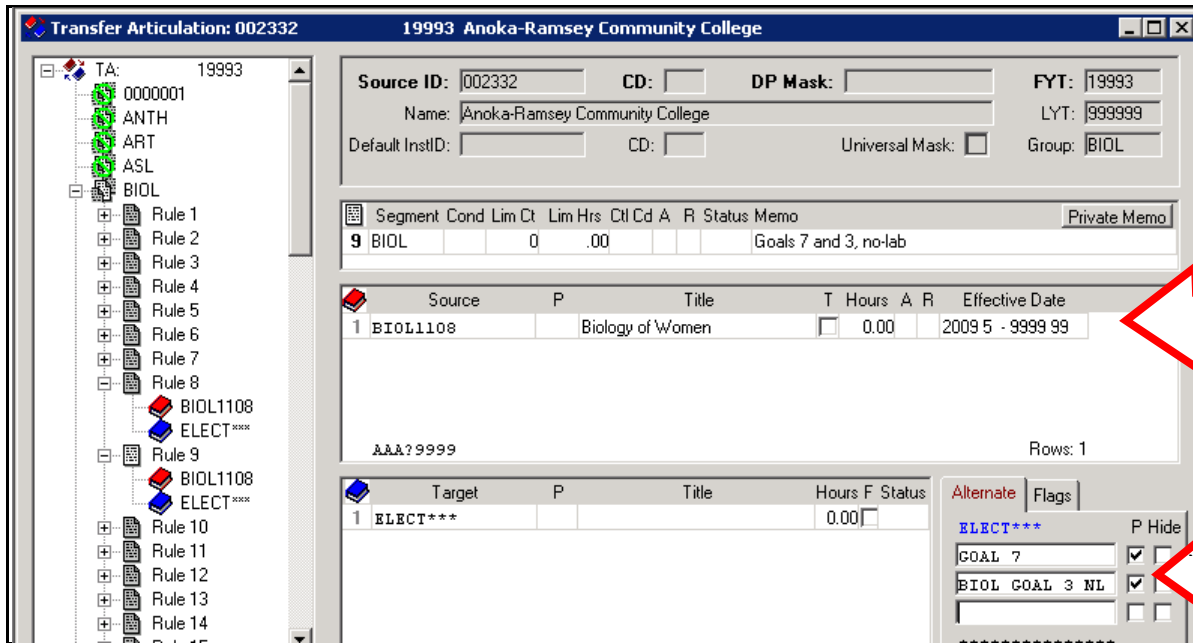
1. On the Source TA table, end-date Effective Date field for the current rule. In our example below, BIOL1108 carried Goal 7.



Add Effective Date range for the course. The date range covers the period of time the course was Goal 7. In the example below, the Effective Date is 1993 – 20095.



2. Add a new rule, following the end-dated rule, with later Effective Dates. You will need to insert a rule after the end-dated rule.
In the example below, the new rule, with succeeding dates, carries alternates for GOAL 7, and BIOL GOAL 3 NL.



MnSCU Curriculum Changes are posted on our website each academic year, at:

<http://www.dars.mntransfer.org/updates/currchanges/changesmenu.html>

Below is an example of the curriculum changes for Anoka Ramsey Community College for the 2015-2016 academic year.

Anoka Ramsey Community College Catalog/Curriculum Changes 202015 - 2016												
SUBJ	COU_NBR	OLD MIN CRHR	OLD MAX CRHR	NEW MIN CRHR	NEW MAX CRHR	NEW TITLE	OLD TITLE	LAST YRTR	LAB IND	TYPE OF CHANGE	CONTENT CHANGE? (Check if Yes)	DEPARTMENT CHANGE? (Indicate new Subject)
BIOL	1103	3		3		Environmental Science Lec	Environmental Science	20155	N	Name Change	<input checked="" type="checkbox"/>	
BIOL	1133			1		Environmental Science Lab		20155	Y	New	<input type="checkbox"/>	
BMED	2600			2		Metrology		20163	Y	New	<input type="checkbox"/>	
BUS	1120			3		Speaking Confidently		20163	N	New	<input type="checkbox"/>	
BUS	1121	3				Delivering Effective Bus Present		20155	N	Dropped	<input type="checkbox"/>	
HPER	1153			1		Zumba		20165	N	New	<input type="checkbox"/>	
HPER	1200			2		Anatomy of Movement		20163	N	New	<input type="checkbox"/>	
HPER	2206	3		4		Intro to Exercise Physiology	Intro to Exercise Phys & Kinesio	20163	N	Name and Credit Change	<input type="checkbox"/>	
HPER	2208			2		Concepts Personal Train		20163	N	New	<input type="checkbox"/>	
HPER	2240	2		3		Coaching & Officiating Theory	Coaching Theory	20163	N	Name and Credit Change	<input type="checkbox"/>	
MATH	0200	5				Beginning Algebra		20153	N	Dropped	<input type="checkbox"/>	
MATH	0205	5				Intro Math Reasoning		20153	N	Dropped	<input type="checkbox"/>	
MATH	0210	5				Intermediate Algebra		20161	N	Dropped	<input type="checkbox"/>	
MATH	0220	3				Algebra for Arts		20155	N	Dropped	<input type="checkbox"/>	
MATH	0240			5		Math Concepts w/Elem Alg		20155	N	New	<input type="checkbox"/>	
MATH	0250			5		Intermediate Algebra		20163	N	New	<input type="checkbox"/>	
PTAC	2110			1		PTAC Research I		20163	N	New	<input type="checkbox"/>	
PTAC	2120			1		PTAC Research II		20165	N	New	<input type="checkbox"/>	
PTAC	2170			1		PT Seminars			N	New	<input type="checkbox"/>	
SOCS	1108	3				Intro Applied Stats I		20155	N	Dropped	<input type="checkbox"/>	
SOCS	1109	3				Intro Applied Stats II		20155	N	Dropped	<input type="checkbox"/>	

Below is an example of the goal area changes for Anoka Ramsey Community College for the 2015-2016 academic year.

Anoka Ramsey Community College - 002332

SUBJECT	NUMBER	TITLE	GOAL AREA	BEGIN DATE	END DATE
BIOL	1133	Environmental Science Lab	03 Lab	20140929	
GEOG	1101	Geography of United State	07		20150801
GEOG	1101	Geography of United State	10	20150802	

TES: Transfer Evaluation System at:

http://tes.collegesource.com/TES_home.asp, allows you to research course changes from one catalog edition to another.

TES Transfer Evaluation System TES 3.0

SEARCH
TRACK
MATCH
SUPPORT
MANAGE
LOGOUT
CollegeSource

Course Finder	
Equivalency Finder	ION SYSTEM
Course List Report	TRICK
Course Change Explorer	TAN STATE UNIVERSITY

ACCOUNT : 013022

SEARCH

Search for course descriptions from a database containing millions of records. Access complete course details, including course title, course code, and credits. View institution profiles, including accreditation, calendar/unit, and more.

TRACK

Route course descriptions and proposed equivalencies to faculty and staff for evaluation. Track the approval process and add notes as needed. Store the results as an equivalency, if desired, and the log of evaluation activity for later review.

MATCH


Create and manage course equivalencies between your course inventory and other institutions. Create both simple and complex articulations. Group articulations for uses like program-to-program articulations, general studies packages, or statewide initiatives.

MANAGE

Administer your TES account. Add users, set user rights, customize your public display, export equivalencies, view usage statistics, and more.

Copyright ©2015 CollegeSource, Inc - All rights reserved.
 Site Last Updated : Friday, September 04, 2015 | [Privacy Policy](#) | [Disclaimer](#) | [About CSI](#)

To compare an institution's courses from one catalog to another, follow the path: TES > Search > Course Change Explorer > Search for an Institution by Name. Once you have identified the school, select two catalogs for your search. The Course Change Explorer allows you to compare the two catalogs for "Changed", "Dropped", or "Added".

Click on the  button beside the course for additional information.

Revised: 09/04/15